



CONSTRUCTION EQUIPMENT SOLUTIONS GOVERNMENT



Contract Holder

Contract # GS-30F-0006U
and # GS-07F-170CA

GSA CONTRACT TERMS

HEAVY EQUIPMENT

GSA Contract # GS-06F-0006U
Schedule 23-V
Automotive Superstore - Construction Equipment
FSC Group 38, Section V
FSC Class 3805, 3830
SIN: 271-101 & 271-106

FORKLIFTS

GSA Contract GS-07F-170CA
Schedule 56
Building and Building Materials - Industrial Services
and Supplies
FSC Group 56
SIN: 629-01A

Contract info on www.GSAAdvantage.gov eLibrary
Email: nacasegovsales@casece.com
Government Support Dept: 1-888-614-3202



U.S. DEPARTMENT OF THE INTERIOR IDIQ CONTRACT TERMS

Contract # F13PC00041

Type: Indefinite Delivery Indefinite Quantity

Issued By: U.S. Fish and Wildlife, Division of Contracting and FA, Arlington, VA

Schedule of Supplies/Services:
Heavy Equipment for Construction

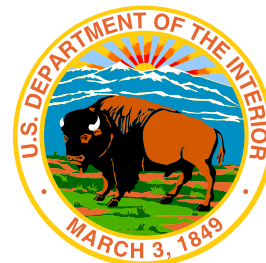
Period of Performance: 02/01/2013 to 12/31/2017

Department of Interior Agencies are available to purchase including:

- National Park Service
- U.S. Fish and Wildlife Service
- Bureau of Indian Affairs
- Bureau of Land Management
- Bureau of Reclamation

Please inquire on the models and options covered by this contract.

For information please contact:
Case Equipment Dedicated Government Service
Phone: 1-888-614-3202
Fax: 1-888-614-3205
Email: nacasegovsales@casece.com



SKID STEER LOADERS

	SR130	SR160	SR175	SV185
Gross hp (kW)	48.8 (36.4) @ 2800 RPM	60 (44.7) @ 2800 RPM	67 (50) @ 2800 RPM	60 (44.7) @ 2800 RPM
Operating weight – lb. (kg)	5,070 (2 300)	5,510 (2 430)	6,270 (2 842)	6,570 (2 980)
Bucket breakout force – lbf. (kN)	4,180 (18.6)	5,270 (23.4)	7,270 (32.3)	5,550 (24.7)
Rated operating capacity – ROC 50% – lb. (kg)	1,300 (590)	1,600 (726)	1,750 (790)	1,850 (840)

	SR210	SR240	SR270	SV280
Gross hp (kW)	74 (55) @ 2500 RPM	74 (55) @ 2500 RPM	90 (67) @ 2500 RPM	74 (55) @ 2500 RPM
Operating weight – lb. (kg)	6,970 (3 160)	7,400 (3 350)	8,117 (3 681)	8,090 (3 670)
Bucket breakout force – lbf. (kN)	7,270 (32.3)	8,680 (39.4)	8,677 (38.6)	8,776 (39.0)
Rated operating capacity – ROC 50% – lb. (kg)	2,100 (953)	2,400 (1 088)	2,700 (1 225)	2,800 (1 270)

	SV300
Gross hp (kW)	90 (67) @ 2500 RPM
Operating weight – lb. (kg)	8,300 (3 765)
Bucket breakout force – lbf. (kN)	7,570 (33.7)
Rated operating capacity – ROC 50% – lb. (kg)	3,000 (1 361)



COMPACT TRACK LOADERS

	TR270	TR310	TR340	TV380
Gross hp (kW)	74 (55) @ 2500 RPM	74 (55) @ 2500 RPM	90 (67) @ 2500 RPM	90 (67) @ 2500 RPM
Operating weight – lb. (kg)	8,270 (3 750)	8,880 (4 027)	10,000 (4 536)	10,200 (4 625)
Bucket breakout force – lbf. (kN)	7,270 (32.3)	8,680 (38.6)	8,700 (38.7)	7,510 (33.4)
Rated operating capacity – ROC 50% – lb. (kg)	2,700 (1 225)	3,100 (1 406)	3,400 (1 542)	3,800 (1 723)



DID YOU KNOW:

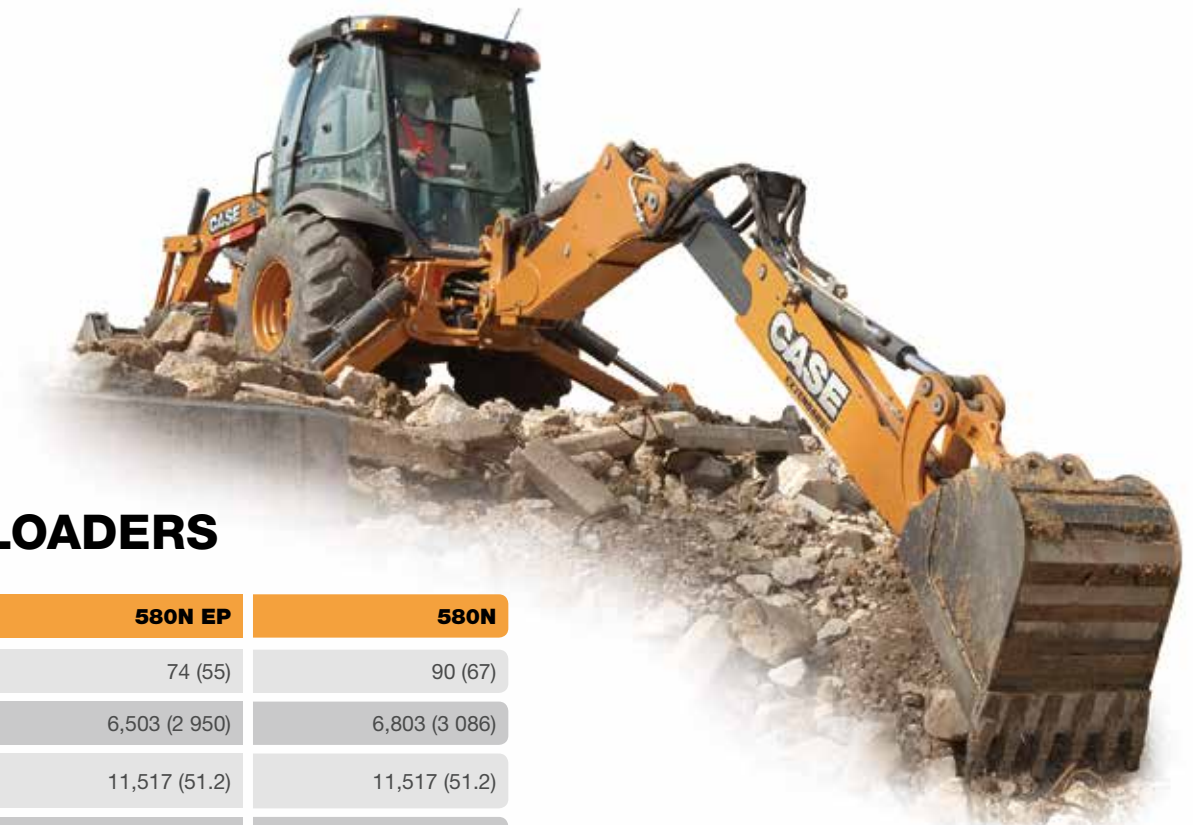
- Case had the Army contract for FoSSL (Family of Skid Steer Loaders) including Skid Steer and Compact Track Loaders.
- Case has fielded over 2,600 Skid Steers since 2007 to the U.S. Military.
- Case Skid Steer and Compact Track Loaders have been in use by Military Horizontal and Vertical Construction Engineer Companies.

TRACTOR LOADER



570N EP

Gross hp (kW)	74 (55)
Operating weight – lb. (kg)	12,898 (5 850)
Loader lift capacity – lb. (kg)	6,503 (2 950)



BACKHOE LOADERS

	580N EP	580N
Gross hp (kW) @ 2200 RPM	74 (55)	90 (67)
Loader lift capacity – lb. (kg)	6,503 (2 950)	6,803 (3 086)
Backhoe bucket breakout force – lbf. (kN)	11,517 (51.2)	11,517 (51.2)
Operating weight, 4WD – lb. (kg)	15,810 (7 171)	17,751 (8 052)

	580 Super N	580 Super N WT	590 Super N
Gross hp (kW) @ 2200 RPM	97 (72.3)	97 (72.3)	110 (82)
Loader lift capacity – lb. (kg)	7,044 (3 195)	8,425 (3 822)	8,325 (3 776)
Backhoe bucket breakout force – lbf. (kN)	14,223 (63.2)	15,070 (67.0)	15,853 (70.5)
Operating weight, 4WD – lb. (kg)	19,067 (8 649)	20,077 (9 107)	20,523 (9 309)

CRAWLER DOZERS

	650L	750M	850M	1150M
Net hp (kW) @ 2000 RPM	80.5 (60)	92 (69)	112 (84)	127 (95)
Operating weight – lb. (kg)	17,550 (7 959)	20,140 (9 090)	21,560 (9 779)	31,134 (14 122)
Drawbar pull – lbf. (kg)	36,000 (160.5)	42,813 (190.4)	42,813 (190.4)	48,000 (213.5)
Blade width – in. (mm)	120 (3 048)	124 (3 150)	124 (3 150)	132 (3 353)

	1650M	2050M
Net hp (kW) @ 2000 RPM	150 (112)	214 (160)
Operating weight – lb. (kg)	37,750 (17 123)	45,398 (20 592)
Drawbar pull – lbf. (kg)	61,200 (272.2)	80,979 (360)
Blade width – in. (mm)	156 (3 962)	135 (3 422)



DID YOU KNOW:

- Case supplied the Army’s HMEE III (High Mobility Engineer Excavator) or BHL (Backhoe Loader).
- Case has produced 696 Armored and Armor Ready units which are currently in use CONUS and OCONUS.
- Production of Backhoe Loaders with maintenance and support.
- The U.S. Army’s Backhoe Loader is based on the Case model # 580 Super M.





FULL-SIZE WHEEL LOADERS

	521F	621F*	721F *	821F Tier 4 Final
Net peak hp (kW)	131 (98)	162 (121)	178 (133)	212 (158)
Operating weight – lb. (kg)	22,873 (10 375)	26,641 (12 084)	31,400 (14 243)	38,541 (17 482)
Full-turn tipping load – lb. (kg)	15,668 (7 107)	19,811 (8 986)	23,371 (10 601)	27,741 (12 583)
Bucket breakout force – lbf. (kg)	18,118 (8 218)	27,223 (12 348)	32,906 (14 926)	40,658 (18 442)
	921F Tier 4 Final	1021F	1121F	1221F
Net peak hp (kW)	241 (180)	296 (221)	321 (239)	351 (262)
Operating weight – lb. (kg)	43,777 (19 857)	53,513 (24 273)	59,578 (27 024)	66,800 (30 300)
Full-turn tipping load – lb. (kg)	31,405 (14 245)	35,320 (16 021)	39,050 (17 713)	45,944 (20 840)
Bucket breakout force – lbf. (kg)	37,553 (17 034)	49,860 (22 616)	49,959 (22 661)	52,360 (23 750)

*Alternative machine configurations available (i.e., Waste Handler, Commodity King).

COMPACT WHEEL LOADERS

	21F Z Bar	21F XT	121F Z Bar	121F XT
Gross hp (kW)	58 (43.0)	58 (43.0)	64 (48.0)	64 (48.0)
Tipping load - straight line - lb. (kg)	8,095 (3 672)	8,256 (3 745)	8,080 (3 665)	8,267 (3 750)
Operating weight - lb. (kg)	11,133 (5 050)	10,913 (4 950)	11,464 (5 200)	11,023 (5 000)
Bucket breakout force - lbf. (kN)	10,764 (48)	7,895 (35)	10,506 (47)	7,685 (34)

	221F	221F HS	321F	321F HS
Gross hp (kW)	74 (55.0)	74 (55.0)	74 (55.0)	74 (55.0)
Tipping load - straight line - lb. (kg)	8,832 (4 006)	8,832 (4 006)	8,988 (4 077)	8,988 (4 077)
Operating weight - lb. (kg)	12,346 (5 600)	12,346 (5 600)	13,228 (6 000)	13,228 (6 000)
Bucket breakout force - lbf. (kN)	11,767 (52)	11,767 (52)	11,634 (52)	11,634 (52)



ROUGH TERRAIN FORKLIFTS

	586H	588H
Gross hp (kW) @ 2200 RPM	74 (55.0)	74 (55.0)
Operating weight - lb. (kg)	14,337 (6 503)	16,684 (7 568)
Lift capacity at 15 ft. @ 24 in. center lb. (kg)	6,000 (2 722)	8,000 (3 629)
Max. fork height - forks horizontal	22 ft. 0 in. (6 706 mm)	22 ft. 0 in. (6 706 mm)

EXCAVATORS

	CX80C	CX130D	CX160D	CX210D*
Net hp (kW)	54 (40) @ 2000 RPM	102 (76.4) @ 2000 RPM	112 (83.2) @ 2200 RPM	160 (119.3) @ 1800 RPM
Maximum digging depth	13 ft. 9 in. (4 180 mm)	18 ft. 3 in. (5 550 mm)	19 ft. 11 in. (6 060 mm)	21 ft. 10 in. (6 650 mm)
Operating weight – lb. (kg)	18,938 (8 590)	29,131 (13 214)	38,391 (17 414)	48,973 (22 214)
Bucket digging force – lbf. (kN)	12,792 (56.9)	21,357 (95.0)	26,527 (118.0)	34,621 (154.0)

	CX250D	CX300D	CX350D	CX470C*
Net hp (kW)	177 (132.1) @ 2000 RPM	207 (154) @ 1800 RPM	266 (198) @ 1900 RPM	362 (270) @ 2000 RPM
Maximum digging depth	22 ft. 8 in. (6 900 mm)	23 ft. 4 in. (7 100 mm)	26 ft. 8 in. (8 140 mm)	25 ft. 4 in. (7 720 mm)
Operating weight – lb. (kg)	56,930 (25 823)	67,230 (30 496)	82,430 (37 390)	105,299 (47 763)
Bucket digging force – lbf. (kN)	39,566 (176.0)	42,781 (190.3)	56,157 (249.8)	60,698 (270.0)

	CX700B	CX800B
Net hp (kW)	463 (345.0) @ 1800 RPM	532 (397.0) @ 1800 RPM
Maximum digging depth	27 ft. 7 in. (8 400 mm)	28 ft. 6 in. (8 690 mm)
Operating weight – lb. (kg)	153,400 (69 518)	178,575 (81 000)
Bucket digging force – lbf. (kN)	71,260 (317.0)	81,156 (361.0)

*Alternative machine configurations available (i.e., long reach, narrow, mass excavation).



SHORT-RADIUS EXCAVATORS

	CX75C SR Tier 4 Final	CX145C SR
Net hp (kW)	54 (40) @ 2000 RPM	100 (74.9) @ 2000 RPM
Maximum digging depth	13 ft. 7 in. (4 130 mm)	18 ft. 1 in. (5 510 mm)
Operating weight – lb. (kg)	16,380 (7 430)	31,967 (14 500)
Bucket digging force – lbf. (kN)	12,792 (56.9)	21,357 (95.0)
	CX235C SR	
Net hp (kW)	160 (119.3) @ 2000 RPM	
Maximum digging depth	21 ft. 10 in. (6 650 mm)	
Operating weight – lb. (kg)	55,997 (25 400)	
Bucket digging force – lbf. (kN)	34,171 (152.0)	



MINI EXCAVATORS

	CX31B Tier 4 Final	CX36B Tier 4 Final	CX55B Tier 4 Final
Net hp (kW)	23.1 (17.2) @ 2400 RPM	23.1 (17.2) @ 2400 RPM	37.4 (27.9) @ 2400 RPM
Maximum digging depth	9 ft. 3 in. (2 820 mm)	10 ft. 0 in. (3 050 mm)	12 ft. 10 in. (3 912 mm)
Operating weight – lb. (kg)	7,320 (3 320)	8,212 (3 725)	11,312 (5 130)
Bucket digging force – lbf. (kN)	6,227 (27.7)	6,227 (27.7)	11,128 (49.4)

COMPACTION

SOIL COMPACTION	SV208	SV210	SV212	SV216
Gross hp (kW)	99 (74)	99 (74)	160 (119)	160 (119)
Operating weight – lb. (kg)	15,740 (7 140)	19,440 (8 820)	28,060 (12 730)	34,880 (15 820)
Centrifugal force – lbf. (kN)	32,586 (145)	35,957 (160)	62,250 (277)	73,037 (325)
Drum width – in. (mm)	66 (1 680)	66 (1 680)	84 (2 130)	84 (2 130)

ASPHALT COMPACTION	DV23	DV26	DV36	DV45
Gross hp (kW)	32.5 (24.2)	32.5 (24.2)	41.6 (31)	41.6 (31)
Operating weight – lb. (kg)	4,960 (2 250)	5,423 (2 460)	8,245 (3 740)	10,296 (4 670)
Frequency – VPM	3,960 (66)	3,960 (66)	3,420 (57)	3,420 (57)
Drum width – in. (mm)	39.4 (1 001)	47.2 (1 199)	51.2 (1 300)	54.3 (1 379)

ASPHALT COMPACTION	DV207	DV209C	DV210C	DV213
Gross hp (kW)	80 (60)	100 (74)	100 (74)	130 (97)
Operating weight – lb. (kg)	16,230 (7 360)	21,030 (9 540)	22,730 (10 310)	28,840 (13 080)
Frequency – VPM	2,580 – 4,020 (43 – 67)*	2,520 – 4,020 (42 – 67)*	2,520 – 4,020 (42 – 67)*	2,520 – 3,300 (42 – 55)
Drum width – in. (mm)	57 (1 450)	66 (1 680)	66 (1 680)	83 (2 100)

COMPACTION	PT240
Gross hp (kW)	99 (74)
Operating weight – lb. (kg)	21,140 (9 590)
Max. operating weight – lb. (kg)	52,910 (24 000)
Compaction width – in. (mm)	78 (1 986)

*Frequency range includes standard and high frequency options.





BUILDING A STRONG CASE

Already in high gear with the arrival of founder J.I. Case's portable steam engine in 1869, we found ourselves at the heart of the road construction boom of the early 1900s. The path was set. Today, CASE is a game changer in construction equipment, financing, parts and service.

Revolutionary is nothing new to CASE, as innovations like the integrated backhoe loader (1957), Ride Control™, over-center boom design and ProCare have shown. It's this ingenuity and spirit that fuels our ongoing pursuit of building industry-leading performance and productivity into every machine throughout our full line of light to heavy equipment.

All of this is backed by a portfolio of more than 10,000 OEM, REMAN and Gold Value parts, more than 350 North American dealer locations, and unmatched financial and insurance services that ensure the best support is always within reach. When all is said and done, our strength is only as solid as the machines we engineer, the support and service we give, and most importantly, the vote of confidence CASE customers have with every bit of it.



Specialized finance programs and flexible leasing packages put you in the driver's seat of industry-leading CASE equipment, while no-nonsense warranties and comprehensive protection plans ensure that your equipment is protected. As the only finance company dedicated to CASE, we offer strong products and services designed around your unique needs and are the only ones supported by the helpful service professionals at your CASE dealer.

To learn more about CASE or for attentive customer service, visit your nearest dealer, call 1-866-54-CASE6 or visit us online at CaseCE.com/gov





nacasegovsales@casece.com
1-888-614-3202
www.CaseCE.com/gov



CaseCE.com/gov



©2015 CNH Industrial America LLC. All rights reserved. CASE is a trademark registered in the United States and many other countries, owned by or licensed to CNH Industrial N.V., its subsidiaries or affiliates. CNH Industrial Capital is a trademark in the United States and many other countries, owned by or licensed to CNH Industrial N.V., its subsidiaries or affiliates. Printed in U.S.A.

Form No. CCE201508GovFull
Replaces Form No. CCE201501GovFull



**SAFETY™
NEVER HURTS**

Always read the Operator's Manual before operating any equipment. Inspect equipment before using it, and be sure it is operating properly. Follow the product safety signs and use any safety features provided.

NOTE: All engines meet current EPA emissions regulations.
NOTE: All specifications are stated in accordance with SAE Standards or Recommended Practices, where applicable.

IMPORTANT: CASE Construction Equipment Inc. reserves the right to change these specifications without notice and without incurring any obligation relating to such change. Availability of some models and equipment builds vary according to the country in which the equipment is used. The illustrations and text may include optional equipment and accessories and may not include all standard equipment. Your CASE dealer/distributor will be able to give you details of the products and their specifications available in your area.



Contains 10%
post-consumer fiber



CASE Construction Equipment
is biodiesel-friendly.